

ARITERM PELLET SYSTEM



(Left) Ariterm Biomix 20
Additionally-equipped with
BeQuem pellet burner.

■ **Double boiler for pellets, wood, electricity and oil which provides both freedom of choice and heating comfort.**

Ariterm Biomix 20 is a double boiler with one furnace adapted for pellet/ oil heating and another furnace for wood heating. Both pellet/oil and wood furnaces have large heat-emitting surfaces.

The wood furnace can handle 35-centimetre-long logs on the ceramic grate. For wood heating the boiler operates on an under-combustion basis in accordance with the so-called selfdraught principle. For pellet and oil burning the boilers operate on an over-combustion basis.

Biomix 20 is equipped with a 8 metre inbuilt, interchangeable cold and hot tapwater coil. Environmentally approved for heating with accumulator tank.

Electrical equipment

Biomix 20 has a socket for 1 electric cartridge. max 9 kW.

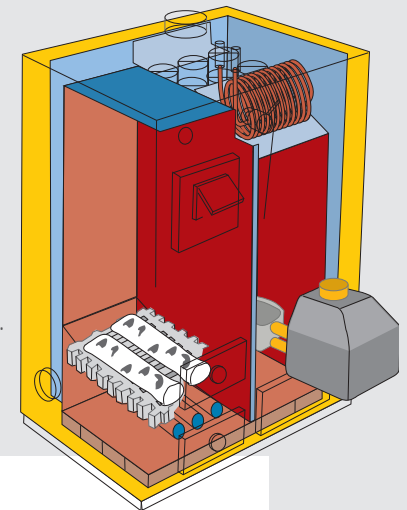
Pellet heating

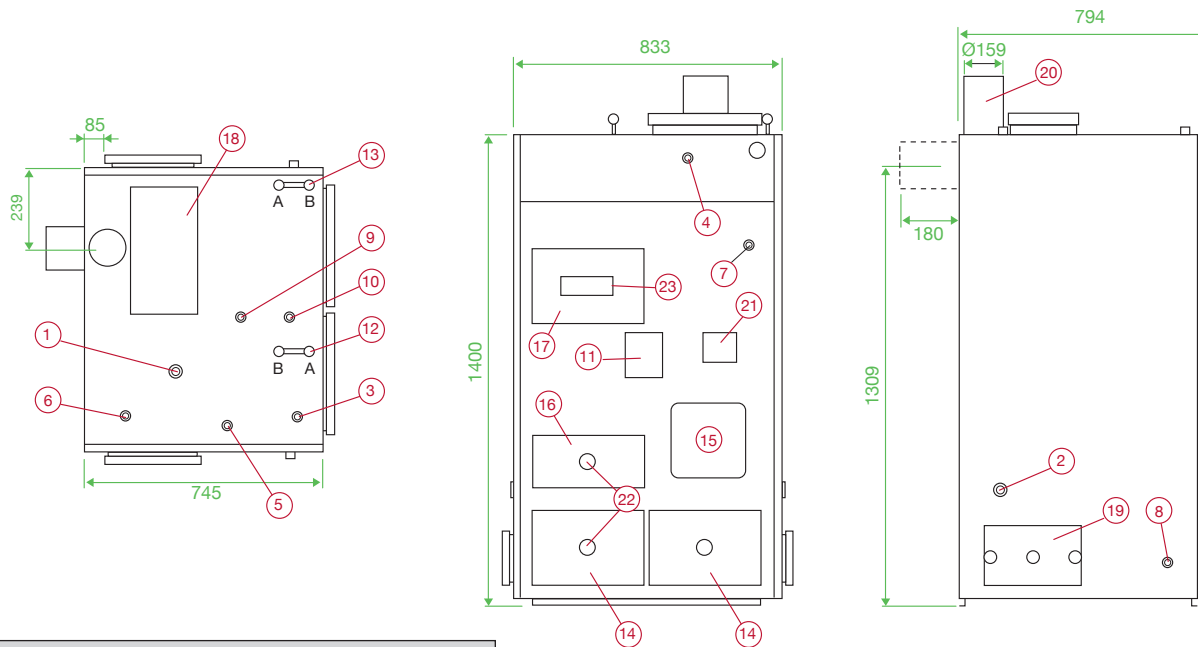
Biomix 20 can be equipped with pellet burner, BeQuem 20 or KMP PX21. The installation can be carried out simply with adapted installation parts.

Biomix 20 is well-suited also for most manufactured by pellet burning.

Ash space

Biomix 20 has a very generous ash space.





Biomix 20			
Part No.			4020
Rated output:	Pellets	kW	20
	Wood	kW	20
	Oil	kW	20
Water volume	Boiler	litre	225
Hot water coil Capacity	Comb flange	m	8,1
Rec. accumulator volume	liter	1000-1500	
Rec. chimney diameter Area	cm ²	175	
	Tube	mm	159
	Min length	m	7
Rec. draught minimum	mm vp	2,5-3,5	
Fire chamber	Depth	mm	400
	approx. litre	80	
Weight	Boiler	kg	495

Always consult with the sweeper about the boiler's arrangement.
NOTE! The boiler should always be connected to accumulator when wood burning – see separate instructions.

Connections:

- | | |
|--|---|
| 1. Feed line | DN 32 |
| 2. Return line | DN 32 |
| 3. Connection for draught regulator | DN 20 |
| 4. Connection for temp./pressure measurement | DN 20 |
| 5. Connection for sensor | DN 15 |
| 6. Expansion | DN 20 |
| 7. Thermostat connection | DN 20 |
| 8. Drainage vent | DN 15 |
| 9. Coldwater connection | Ø 22 Cu |
| 10. Hotwater connection | Ø 22 Cu |
| 11. Electric cartridge connection | 1 st DN 50 |
| 12. Damper switch | Pos A = starting-up position // Pos B = undercombustion |
| 13. Växelspjäll | Pos A = wood burning / Pos B = pellets/oil |
| 14. Ash chamber hatch | |
| 15. Pellet / oil burning connection | |
| 16. Middle hatch | |
| 17. Refilling hatch for wood | |
| 18. Cleaning hatch | |
| 19. Sweeping hatch (left/right) | |
| 20. Flue pipe connection Ø 139 mm | |
| 21. Sight glass | |
| 22. Secondary air vent | |
| 23. Draught hatch | |

Included in the delivery:

- Oblique flue pipe for both vertical and horizontal installation.
- Sweeping gear
- Mounting plate for BeQuem pellet burner
- Hydrothermometer

As accessories:

- 3367 Circulation pump 21
- 3368 Circulation pump 4030

Accumulator

With Laddomat 21 or 4030 (accessory) you receive a defined layer between the hot and cold water in the tank. In this way the time between each combustion is extended providing higher heat and hot water comfort.

Ceramic fire grate

All modern wood boilers are Biomix equipped with ceramic fire grate. The intervals between changing varies depending on combustion quality and management.

Chimney

When installing a new boiler the chimney should always be inspected to check on density, draught ratio and risk of condensation. Any draught regulator or inlet pipe should be installed.

Local Dealer